

ISLE OF ANGLESEY COUNTY COUNCIL	
Report to:	EXECUTIVE COMMITTEE
Date:	31/5/2016
Subject:	Regional Partnership Board
Portfolio Holder(s):	Aled Morris Jones
Head of Service:	Alwyn Jones/Anwen Huws
Report Author:	Glyn Hughes
Tel:	2802
E-mail:	GlynHughes@Anglesey.gov.uk
Local Members:	n/a

A –Recommendation/s and reason/s
<p>To approve the establishment of a Regional Partnership Board as outlined in Option 1 below.</p> <p>Part 9 of the Social Services and Well-Being (Wales) Act 2014 that came into force on 6th April 2016 requires the establishment of a Regional Partnership Board which are statutory boards within each region in Wales.</p> <p>Part 9 of the Social Services and Well-Being (Wales) Act 2014 also requires local authorities to make arrangements to promote co-operation with their relevant partners and others in relation to adults with needs for care and support, carers and children. It places a duty on relevant partners to co-operate with, and provide information to, the local authorities for the purpose of their social services functions.</p> <p>Part 9 also provides for partnership arrangements between local authorities and Local Health Boards for the discharge of their functions, it also provides Welsh Ministers with regulation making powers in relation to formal partnership arrangements, resources for partnership arrangements (including pooled funds) and partnership boards.</p> <p>The purpose of Part 9 is to improve outcomes and well-being of people as well as improving the efficiency and effectiveness of service delivery. The key aim of co-operation, partnership and integration are described the Statutory Guidance as:</p> <ul style="list-style-type: none"> • to improve care and support, ensuring people have more say and control • to improve outcomes and health and well-being • provide co-ordinated, person centered care and support • make more effective use of resources, skills and expertise. <p>The objectives of the Regional Partnership Boards are to ensure the partnership boards work effectively together to:</p> <ul style="list-style-type: none"> • respond to the population needs assessment carried out in accordance with section 14 of the Social Services and Well-Being (Wales) Act • implement the plans for each of the local authority areas covered by the board which local authorities and local health boards are required to prepare and publish under section 14A of the Act

- Ensure the partnership bodies provide sufficient resources for the partnership arrangements, in accordance with their powers under section 167 of the Act
- Promote the establishment of pooled funds where appropriate.

Regional Partnership Boards will also be required to prioritise the integration of services in relation to:

- Older people with complex needs and long term conditions, including dementia
- People with learning disabilities
- Carers, including young carers
- Integrated Family Support Services
- Develop integrated services for children with complex needs due to disability or illness and for children and young people with mental health problems. This includes transition arrangements from children to adult services
- Ensure that pooled funds are established and managed for the exercise of care home accommodation and family support functions as well as for functions that will be exercised jointly as a result of an assessment carried out under section 14 of the Act. Pooled funds in relation to care home accommodation are required from 6th April 2018.

Statutory guidance lists those who must be members of the Regional Partnership Board as follows however, regions can co-opt other persons to be members of the board as appropriate.

- At least one elected member of a local authority which established the regional partnership board
- At least one member of a Local Health Board which established the regional partnership board
- The person appointed as director of social services under section 144 of the Act in respect of each local authority which established the regional partnership board, or his or her nominated representative
- A representative of the Local Health Board which established the regional partnership board
- Two persons who represent the interest of third sector organisations in the area covered by the regional partnership board
- At least one person who represents the interests of care providers in the area covered by the regional partnership board
- One person to represent people with needs for care and support in the area covered by the regional partnership board
- One person to represent carers in the area covered by the regional partnership board.

Appropriate arrangements should be made at a strategic level to engage with other boards and organisations as needed. There is also a need to foster engagement through existing networks or forums, or through the development of new networks or forums.

There is a requirement that the Regional Partnership Board prepares and submits to Welsh Ministers an annual report on the extent to which the board's objectives have been achieved. The first report must be prepared and submitted by 1st April 2017 – this report must be published and include information on the membership of the Regional Partnership Board; information on how the board has met its objectives including financial information and progress reports; details of the partnership arrangements in place to respond to the joint population needs assessment and priority areas; how the board has engaged with service users or groups representing service users; information on how the partnership arrangements have contributed to improved outcomes and service delivery and how resources have been effectively utilised; information on the statutory provisions used or informal arrangements underpinned by written

agreement.

B – What other options did you consider and why did you reject them and/or opt for this option?

For a number of years North Wales has had a regional governance structure relating to collaborative and joint working. The Social Services and Health Programme Board was established as one of four programme boards across North Wales which was chaired by the sponsoring Chief Executive Officer.

For a number of years also, Directors of Social Services and Health Board Directors used to meet quarterly and this was known as the NWSSIC/BCU Strategic meetings.

In 2014/15 under the Delivering Transformation grant funding programme from Welsh Government each region was required to set up their governance structure to mirror the national structure and create a Partnership Forum and Leadership Group. Rather than develop an additional governance structure North Wales changed its Programme Board into the North Wales Partnership Forum and the NWSSIC/BCU Strategic meetings became the Leadership group – inviting additional membership as was required by Welsh Government.

When considering the requirements within Part 9 of the Act, two options have been considered and these would replace the current regional governance structure. The options are outlined in Appendix 1.

Following a workshop held on 14th March 2016 with members of the current Partnership Forum and Leadership Groups, it was agreed that the preferred option was Option 1. This option was preferred as, it was not felt that the Regional Partnership Board would be able to manage the mixing of strategic and operational responsibilities and it was felt that this would impede its effectiveness. The Regional Partnership Board would report directly to the Regional Leadership Board, the Public Services Boards and have a key role working with the regional citizens panel.

As the Regional Partnership Board will be a statutory function it will require bilingual and translation services.

At the meeting of the Partnership Forum on 14th March 2016 it was agreed that, in the first instance the Partnership Forum will act as the shadow Regional Partnership Board and will meet regularly over the next few months to work on the establishment of the Regional Partnership Board. It was also agreed that, in the interim, the current Chair of the Partnership Forum will be co-opted onto the Regional Partnership Board and remain Chair of the first 12 -18 months to provide continuity and to maintain pace around the establishment of the Regional Partnership Board.

C- Why is this a Decision for the Executive?

Formal partnership arrangements require prior Executive approval. Given the significance of this partnership it is considered that this be a decision for the Executive as a whole, rather than the relevant portfolio holder.

D – Is this decision consistent with policy approved by the full Council?

Yes

E – Is this decision within the budget approved by the Council?

Currently the Welsh Government Delivering Transformation Grant financially supports the current governance structure and this will remain the case during 2016/17 in relation to the Regional Partnership Board and the regional activity relating to implementation of the Act however, this is the final year of this grant in its current form, from 2017/18 this grant will be included in the RSG settlement of the Local Authorities.

The Regional Partnership Board will need to consider and make a recommendation on how the Regional Partnership Board and its programme of work is funded from 2017/18 onwards.

F – Who did you consult?**What did they say?**

F – Who did you consult?	What did they say?
1 Chief Executive / Strategic Leadership Team (SLT) (mandatory)	
2 Finance / Section 151 (mandatory)	
3 Legal / Monitoring Officer (mandatory)	
5 Human Resources (HR)	
6 Property	
7 Information Communication Technology (ICT)	
8 Scrutiny	
9 Local Members	
10 Any external bodies / other/s	

G – Risks and any mitigation (if relevant)

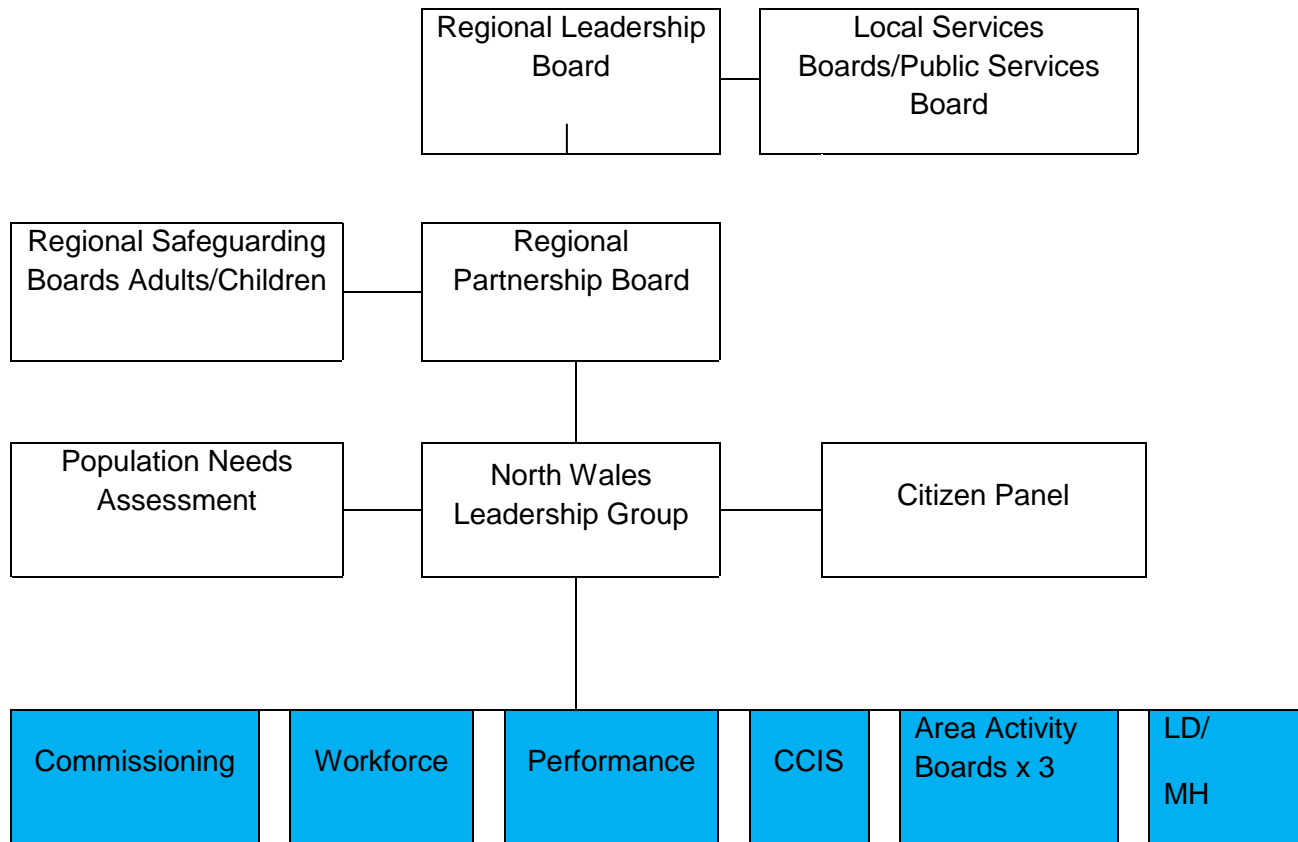
1	Economic	N/A
2	Anti-poverty	N/A
3	Crime and Disorder	N/A
4	Environmental	N/A
5	Equalities	N/A
6	Outcome Agreements	N/A
7	Other	Whilst it is a requirement to have a Regional Partnership Board, there are risks associated with

		<p>the ambition, pace and prioritised areas for integration of services as required within the Act.</p> <p>Ongoing funding to support the Regional Partnership Board from April 2017 onwards.</p> <p>Whilst the Regional Partnership Board is statutory it has no decision-making powers.</p>
--	--	---

H - Appendices:

Partnership Arrangements Options considered:

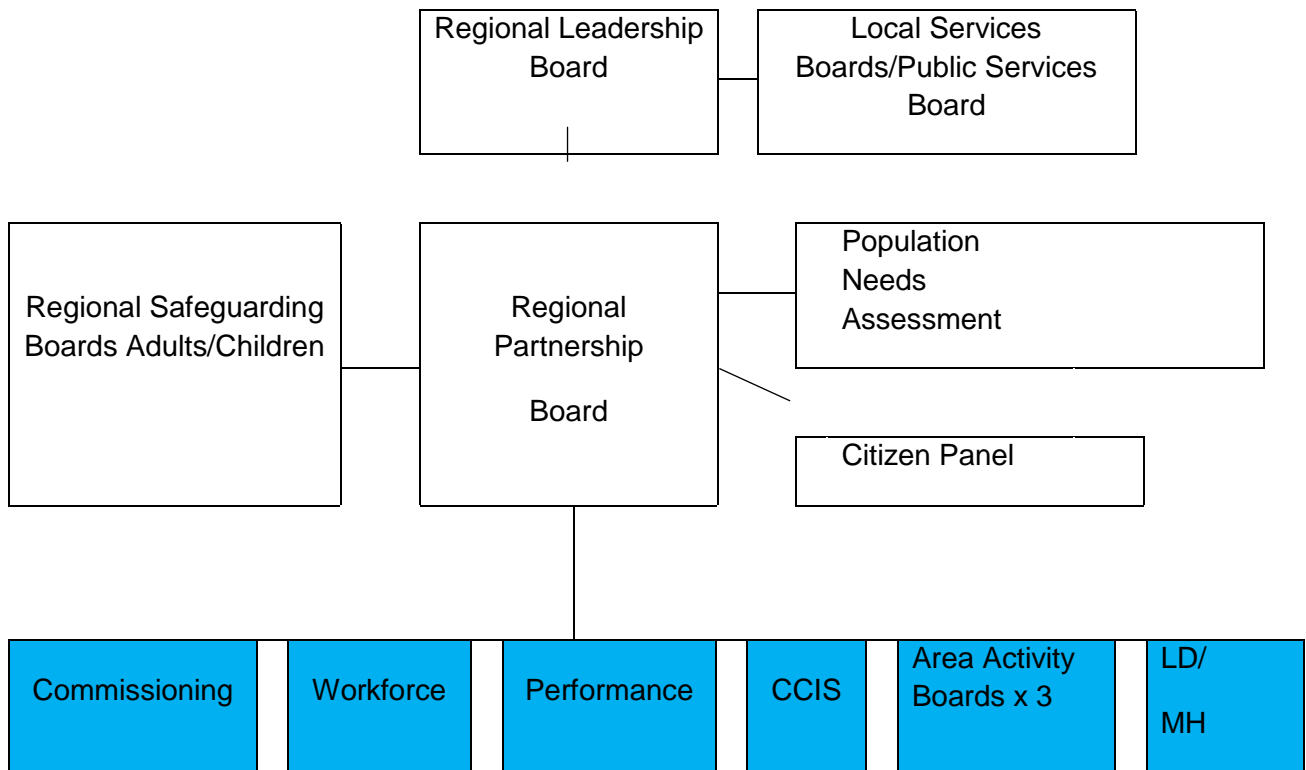
Option 1



The rationale for this arrangement is that the Board would play a key role in ensuring the development of regional partnership arrangements and meet the requirements of the Act best through a role overseeing the progress of the regional work streams and reporting directly to Chief Executives of each of the 7 statutory agencies in the Regional Leaders Board. It would have a direct link also through the Chief Executives to the local Public Service Boards and a key role in working with the Regional Citizens Panel. The Leadership Group would be the delivery mechanism through which the Board priorities were realised.

Option 2

In this option the Leadership group would not be included, with the Partnership Board managing projects directly:



The rationale for this arrangement is that the Board would meet the requirements of the Act best through a role directly overseeing the progress of the regional workstreams, as well as maintaining a strategic oversight without the need for a Leadership group, and reporting directly to Chief Executives of each of the 7 statutory agencies in the Regional Leaders Board. It would have a direct link also through the Chief Executives to the local Public Service Boards and a key role in working with the Regional Citizens Panel.

I - Background papers (please contact the author of the Report for any further information):

Further in-depth information in relation to Part 9 of the Act and the Regional Partnership Board can be found in the Social Services and Well-Being Act 2014 and within the Statutory Guidance on Partnership Arrangements which have been published by the Welsh Government.